



15 Whittlesford Road, Newton, Cambridge, CB22 7PH

£1,950 Per month

- Corner plot with enclosed garden
- Double glazing throughout
- Open plan dining area with sky light and patio doors
- Connections to national rail from Foxton and Shelford.

15 Whittlesford Road, Cambridge CB22 7PH

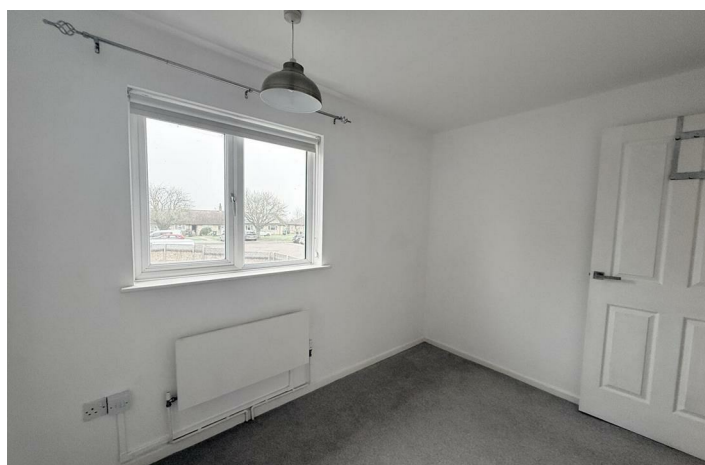
Beautifully presented three-bedroom semi-detached home, situated in this popular southern village.

The property offers a generous 1,033 sq ft of well-appointed living space, making it an ideal family home.

The accommodation includes an open-plan kitchen/dining room, a well-proportioned reception room ideal for entertaining, three good size bedrooms, modern family bathroom and an enclosed rear garden.



Council Tax Band: D



Reception Room

21'6" x 11'1"

Storage cupboard

3'6" x 6'6"

Entrance hall

Kitchen/Dining room

19'1" x 11'11"

W/C

Bedroom 1

10'8" x 11'1"

Bedroom 2

10'6" x 11'2"

Bedroom 3

7'6" x 10'0"

Bathroom

7'6"

Front exterior

Rear Garden



Directions

Viewings

Viewings by arrangement only. Call 07398313902 to make an appointment.

EPC Rating:
C

Energy Efficiency Rating		
	Current	Potential
Very energy efficient - lower running costs		
(92 plus) A		
(81-91) B		
(69-80) C	76	
(55-68) D		
(39-54) E		
(21-38) F		
(1-20) G		
Not energy efficient - higher running costs		
England & Wales		EU Directive 2002/91/EC